

# SPLIT SERVICE INSTRUCTIONS

regulatory facility instructions for upcoming split services at Nerang Community hall

## Entry Sign-in

Entering through the front door only  
You will be required by law to sign-in



Hand disinfectant dispensers are located both the entrance and exit of the facility

## Communion Bread and Wine

We will have assistants wearing gloves to hand out individual bread and wine to 5-10 patrons at a time during communion



We ask for patience during this process, communion may take longer than usual  
Wine cups will be disposable and can be thrown out after the service

## Restroom Facilities

One disabled toilet facility will be open  
Public restrooms are available outside



Use the toilet before attending church and only use the disabled toilet if you are unable to use the public toilets

## Post Service

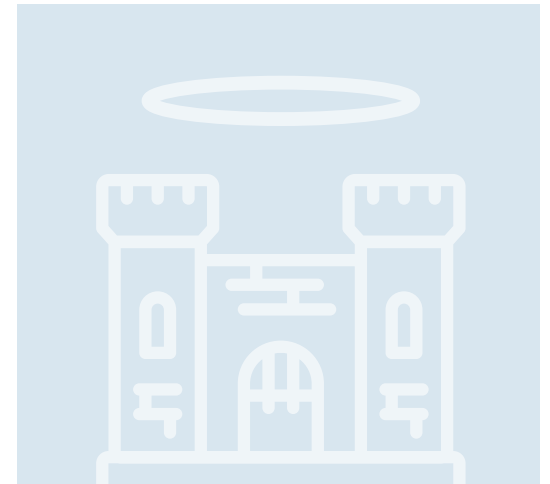
We have to vacate the facility directly after the end of the service



For those who want to attend we are meeting down at Bischoff Park for a picnic and fellowship

## Kids Kingdom

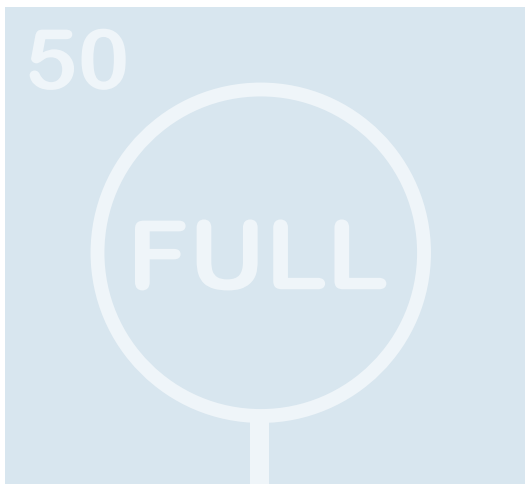
Sign in your children before entering  
Kids Kingdom will last all service



Kids Kingdom location is in the downstairs room behind the hall

## Venue Capacity

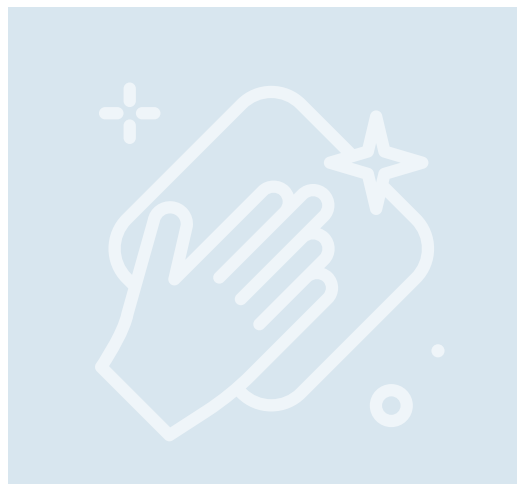
Numbers in the facility will be strictly measured to ensure compliance



If 50 people are reached we will ask you to attend our second service

## Surface Cleaning

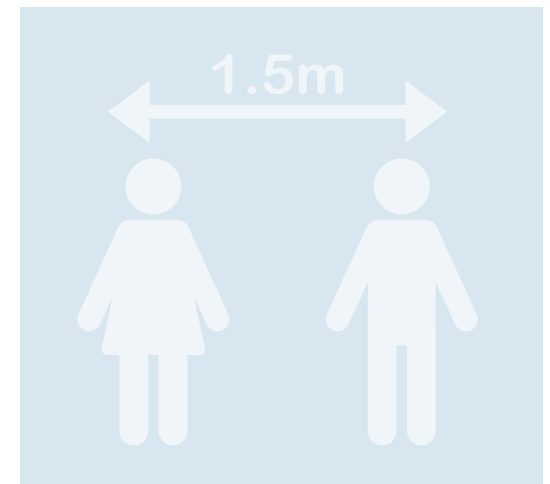
Before and after each service we will be wiping down all surfaces



This ensures we comply with both state and federal regulations

## Social Distancing

Ensure at all times you are adhering to 1.5m social distancing rules



Ensure hugging and other physical contact is minimised. This excludes those you share residence with.